

2019

“CUPPEDIAE

confectionery

/kən'fekʃ(ə)n(ə)ri/

Noun

1.sweets and chocolates considered collectively.

"items of confectionery"

2. a shop that sells sweets and chocolates.

plural noun: confectioneries

"chocolate and fudge are made daily at the village confectionery"

PORTUGAL_SANTO TIRSO
INTERIOR DESIGN_ CREATEX - Residências Criativas
by VALÉRIA FERREIRA

INSPIRATION MOODBOARD #1

Textiles inspired by the sculptures



Sem o teu nome, 1996
Rui Chafes



Sculptura – *Santo Tirso '96*, 1996
Mauro Staccioli



Traditional pastries: Limonetes and Jesuítas

Interior Design Typologies

SEATING

armchairs, sofas, loveseats, chaise longues, exterior seating, stools, chairs, beds, bean bags, poufs, recliners

TABLES

coffee table, dinner table, kitchen table, accent table, desks, side table, nightstand

TEXTILES

curtains, pillows, blankets, sheets, throws, table cloth, rugs

SURFACES

counters, dressers, consoles, bookcases, cabinets, drawers, wardrobe, armors, credenzas

LIGHTING

SILVERWARE

Textiles inspired by the pastries



Other materials



Terrazzo Ceramic



Metal



Concrete



Wood



Resin



Glass

INSPIRATION MOODBOARD #2

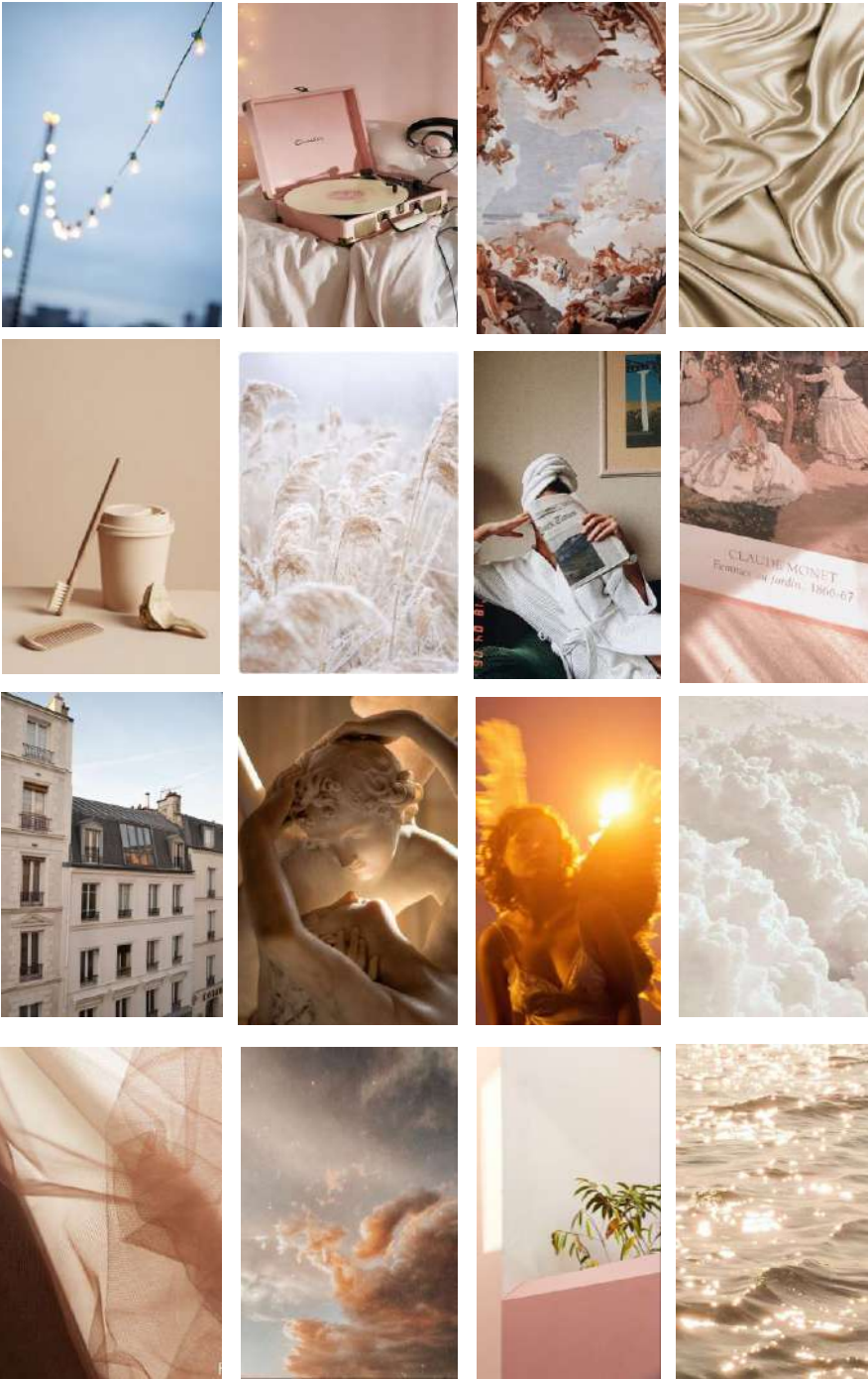
Chosen furniture:

1. Chaise longue
2. Rug
3. Side table
4. Floor lamp
5. Throw pillow



COLOUR RESEARCH MOODBOARD #3

ENVIRONMENT INSPIRATION



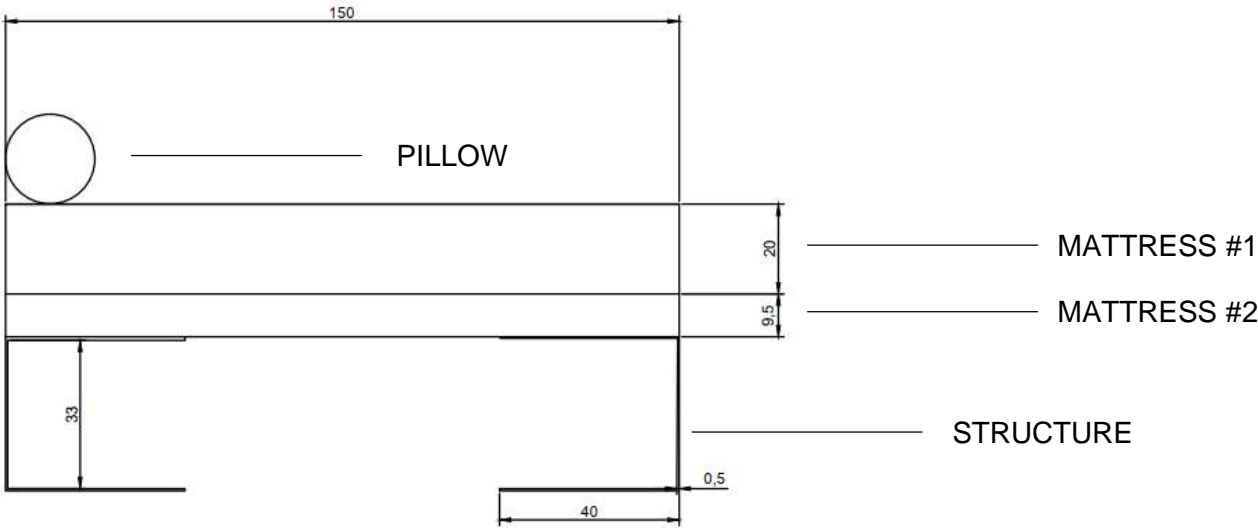
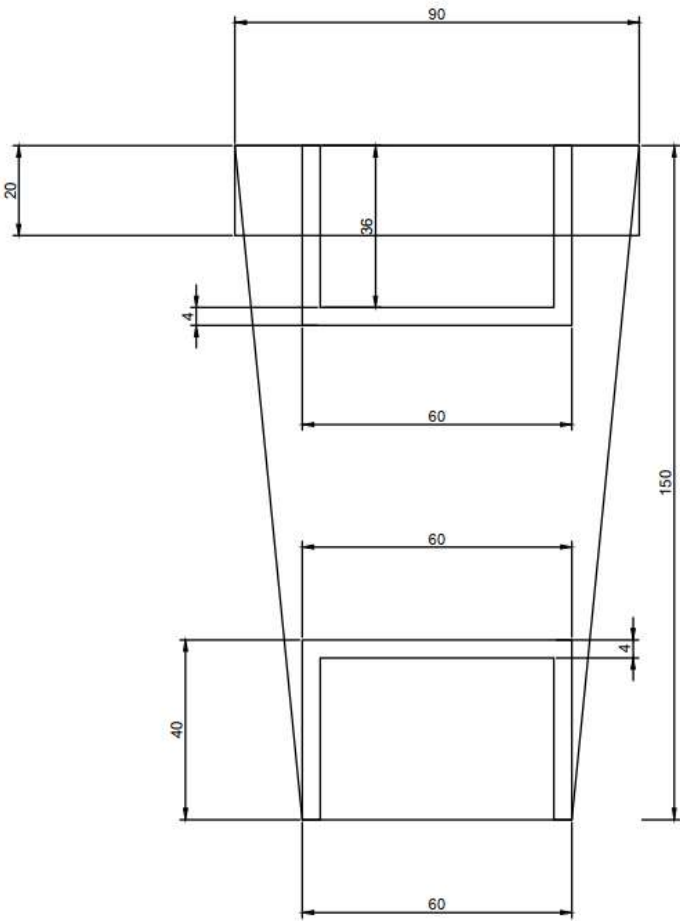
With this pictures, we can manage to understand some kind of context environment. The collection is based on the pastries and sculptures of Santo Tirso, but the big picture leads us to a luxurious environment, with notes of comfort and art, all mixed with some inspiration from the sunrise and the sunset. The colors are inspired by the chosen materials to use on the collection, some of the pictures and some trendy colors.

COLLECTION: CUPPEDIAE

CHAISE LONGUE LESUITÆ

This chaise longue is inspired by a Jesuíta. *It's* shape resembles the sweet pastry from Santo Tirso, combining two different materials in order to stay true to the two layers of the Jesuíta: the merengue layer and the puff pastry layer. The colours and materials were chosen to maintain the natural appearance of the pastry: beige and gold. *It's* name is the latin word for Jesuíta, lesuitae.

MEASURES



MATERIALS



Stainless Steel
In Golden Brass

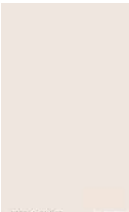


textile1443

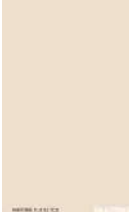


textile1456

COLORS



PANTONE
11-1302 TCX

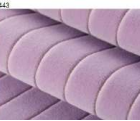


PANTONE
11-0110 TCX



PANTONE
8365 C

PILLOW



PANTONE
11-0110 TCX

MATTRESS #1



PANTONE
11-1302 TCX

MATTRESS #2



PANTONE
11-0110 TCX

STRUCTURE



PANTONE
8365 C

COLLECTION: CUPPEDIAE

PILLOW 1540

This pillow is inspired by a Limonete. Its name was chosen in order to honor the date when the Jesus Society was allowed to be founded, in 1540 by Pope Paul III.
The shape is circular, inspired in the upper layer of the Limonete. It also sports a cross on top, just like the pastry itself.
The materials were chosen to match the chaise-longue.

MATERIALS

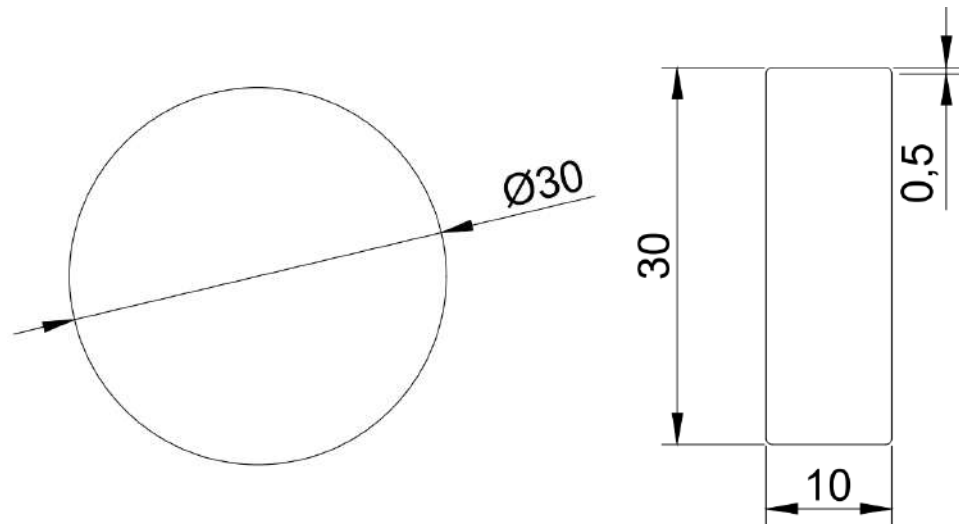


textile1443



textile1456

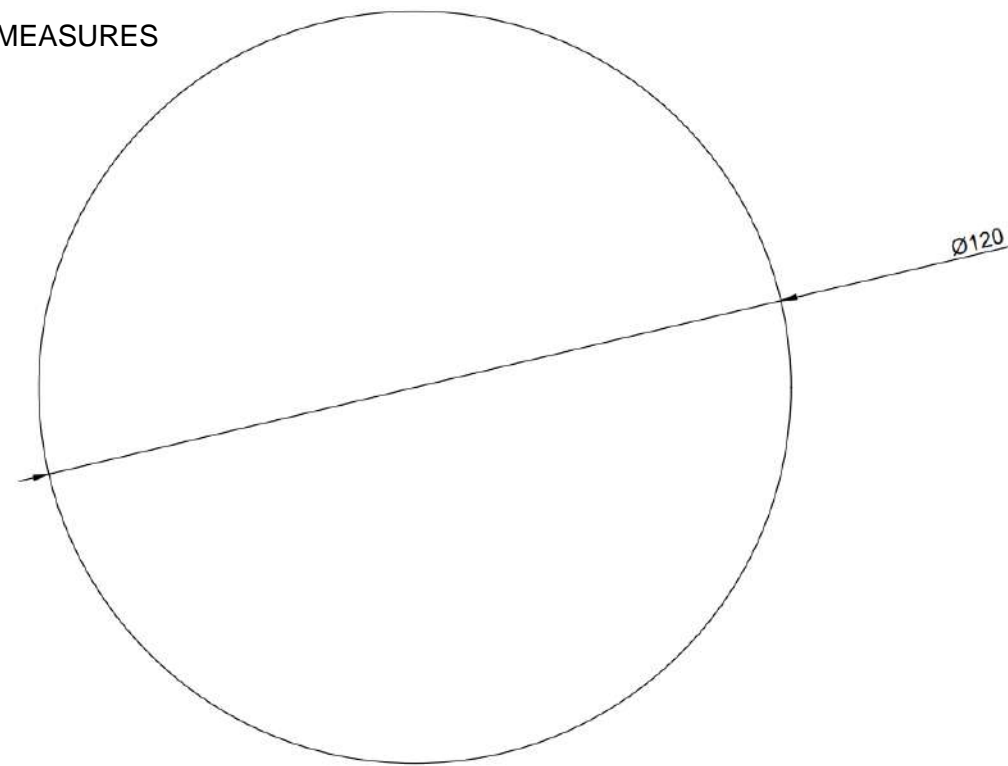
MEASURES



RUG III

This rug, just like the pillow, is inspired by a Limonete. Since these two collection items are circular and the only ones that are entirely made of fabric, they connect themselves through the same concept and materials. The rug also has a cross in the middle, just like a regular Limonete.
Its name was given after Pope Paul III, the Pope who allowed the creation of this religious order.

MEASURES



COLORS



COLORS



CROSS



PANTONE 11-1302 TCX

PILLOW BASE



PANTONE 11-0110 TCX

CROSS



PANTONE 11-1302 TCX

RUG BASE



PANTONE 11-0110 TCX

COLLECTION: CUPPEDIAE

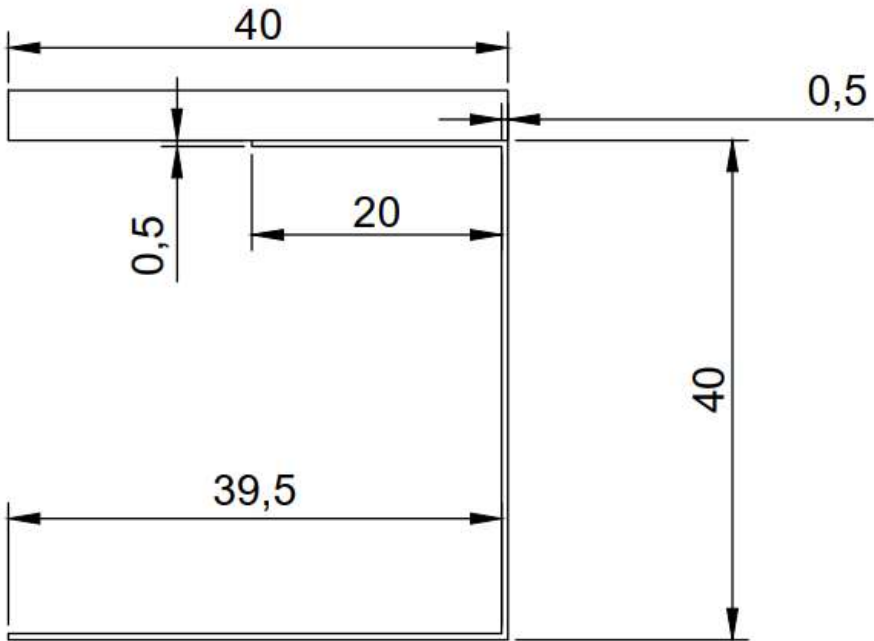
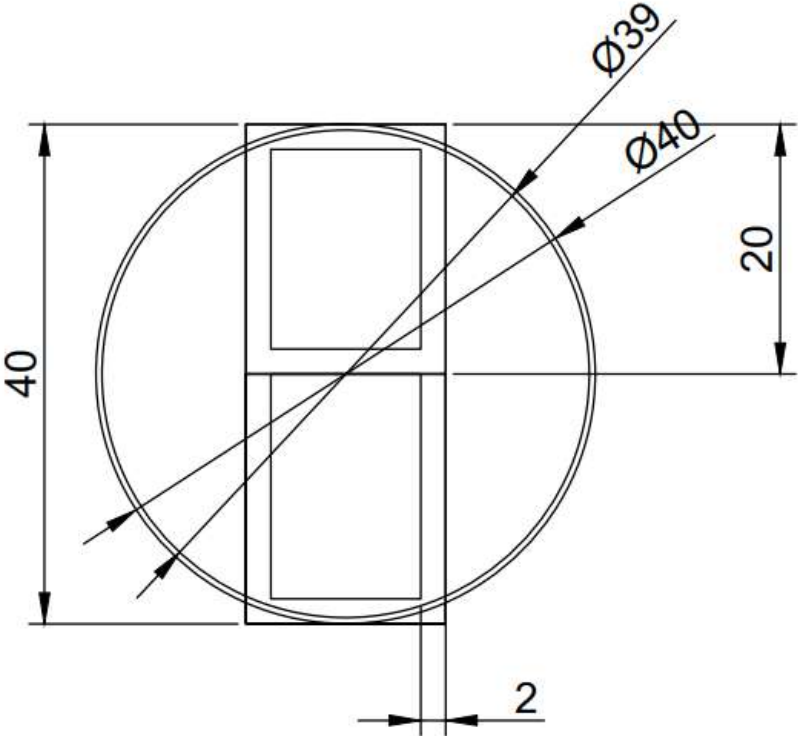
TABLE LOYOLA

The side table, called LOYOLA (which is the last name of the founder of The Society of Jesus, St. Ignatius of Loyola) is composed by two pieces: the surface, made of terrazzo ceramic and the metallic structure that matches the chaise-*longue*'s. This side table is round in honor of two elements: the sculpture *Scultura – Santo Tirso '96, from Mauro Staccioli* and the Limonete shape, another traditional pastry from Santo Tirso.

COLORS



PANTONE
8365 C



MATERIALS



Stainless Steel
In Golden Brass

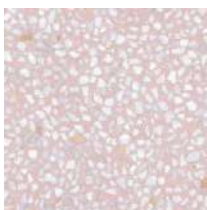


Terrazzo
ceramic

CERAMIC SAMPLES



Product:
Resin Terrazzo MMDR-008
Family: Resin Terrazzo
Manufacturer: [Mondo Marmo Design](#) >
Order number: MMDR-008
Architonic ID: 20014665
Country: Italy
Launched: 2000



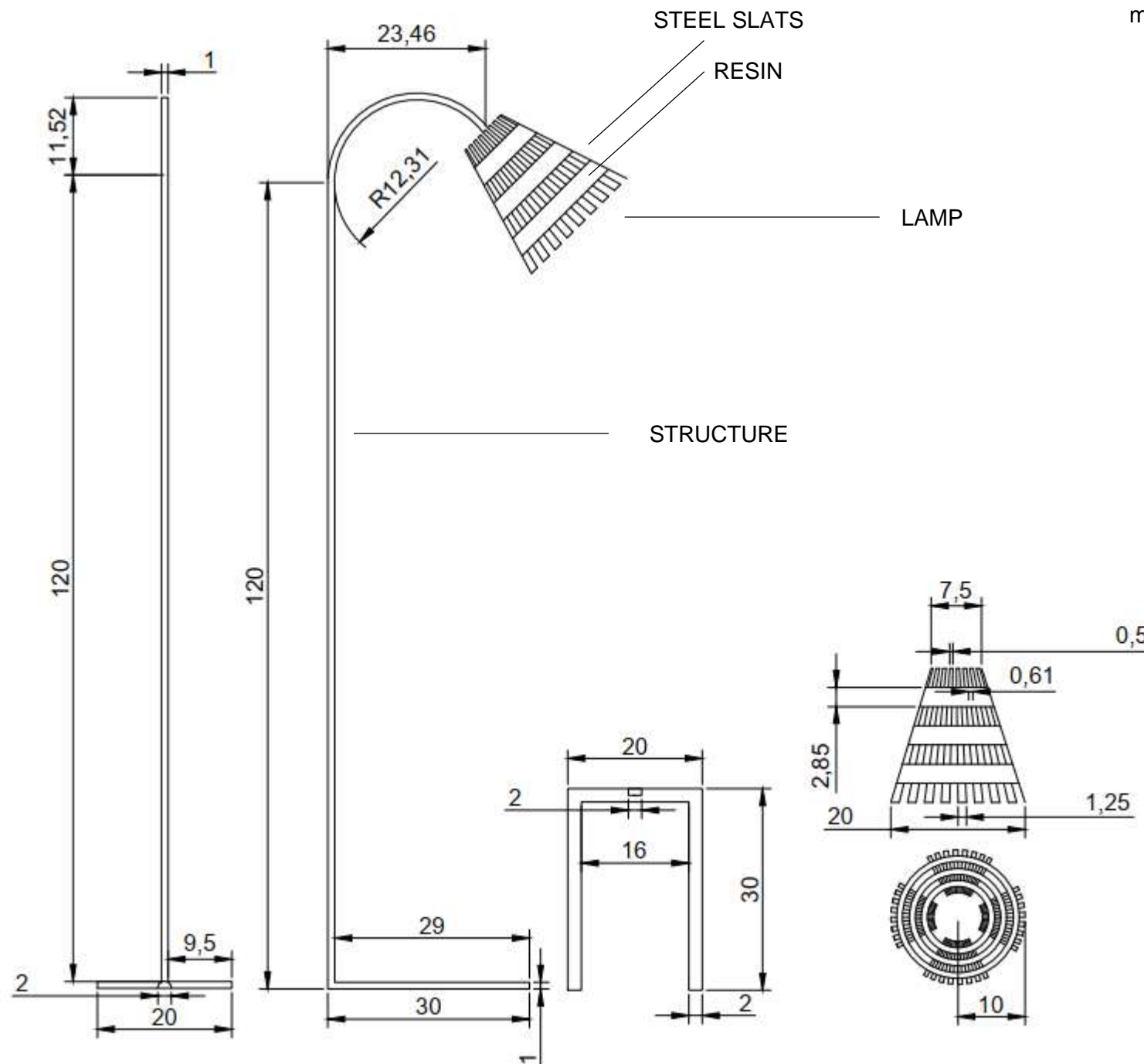
Product:
Farnese Amalfi Rosa
Family: Farnese
Manufacturer: [VIVES Cerámica](#) >
Architonic ID: 1460205
Country: Spain
Launched: 2017

COLLECTION: CUPPEDIAE

FLOOR LAMP fRANCiS

The floor lamp, named fRANCiS (after Pope Francis, the first Jesuit pope in the History of Religion), was created as a mixture between the two sculptures: *Scultura – Santo Tirso '96*, from Mauro Staccioli and *Sem o Teu Nome*, by Rui Chafes. It features the individual metal slats of the later sculpture and the circular shapes of the first sculpture.

MEASURES



MATERIALS



Polymer based resin



Stainless Steel In Golden Brass

COLORS



PANTONE 8365 C

LAMP



TRANSPARENT WITH A GLOSSY FINISH

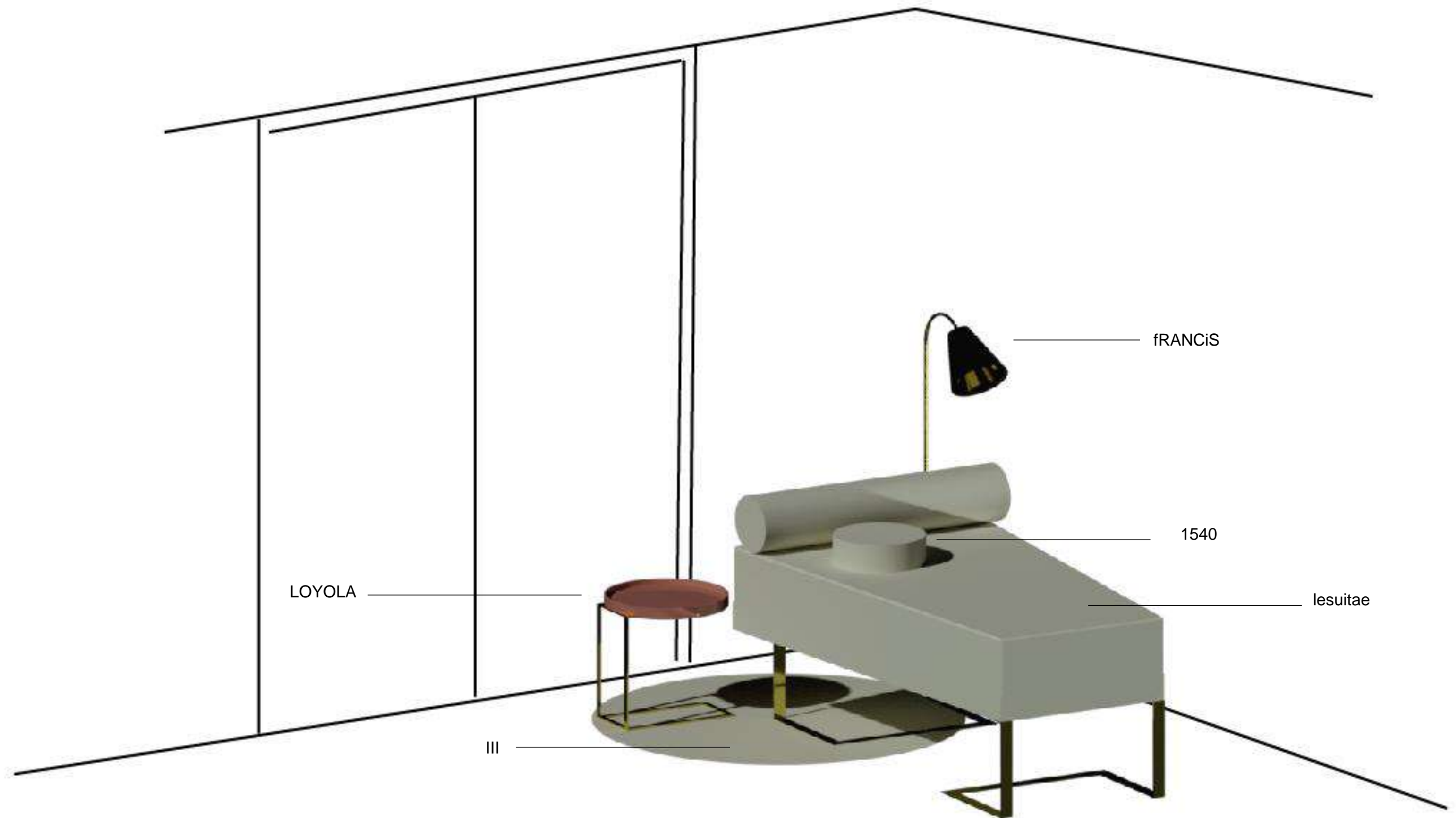


PANTONE 8365 C

STRUCTURE



PANTONE 8365 C



CONTEXTUALIZATION_ 3D MODEL

[illegible]