

Creater Project

INSPIRING HERITAGE

QUERALT PORTELL GILIBETS
GIRONELLA, SPAIN

Design 1

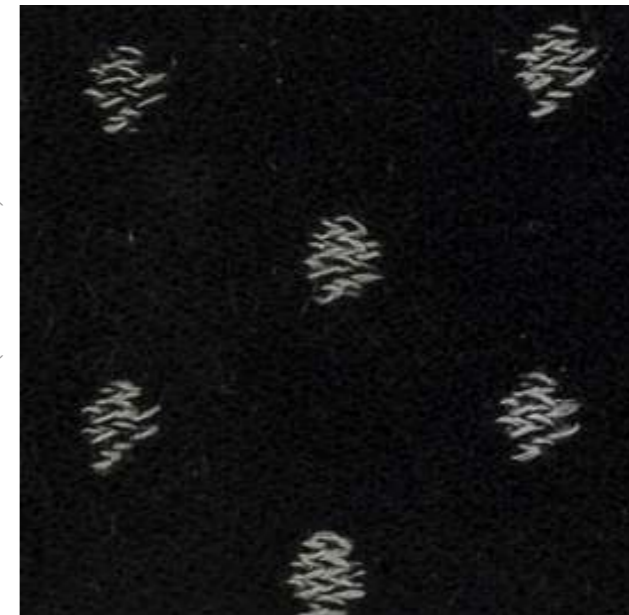
The designed sweater is inspired by the different knitwear placed on the right. By doing the shorter part of the front and a higher crop behind the longest below the hip. With a high and very open neck, with long sleeves and with them.



147-F2 (SPAIN)



BM55301-1 (SWEDEN)

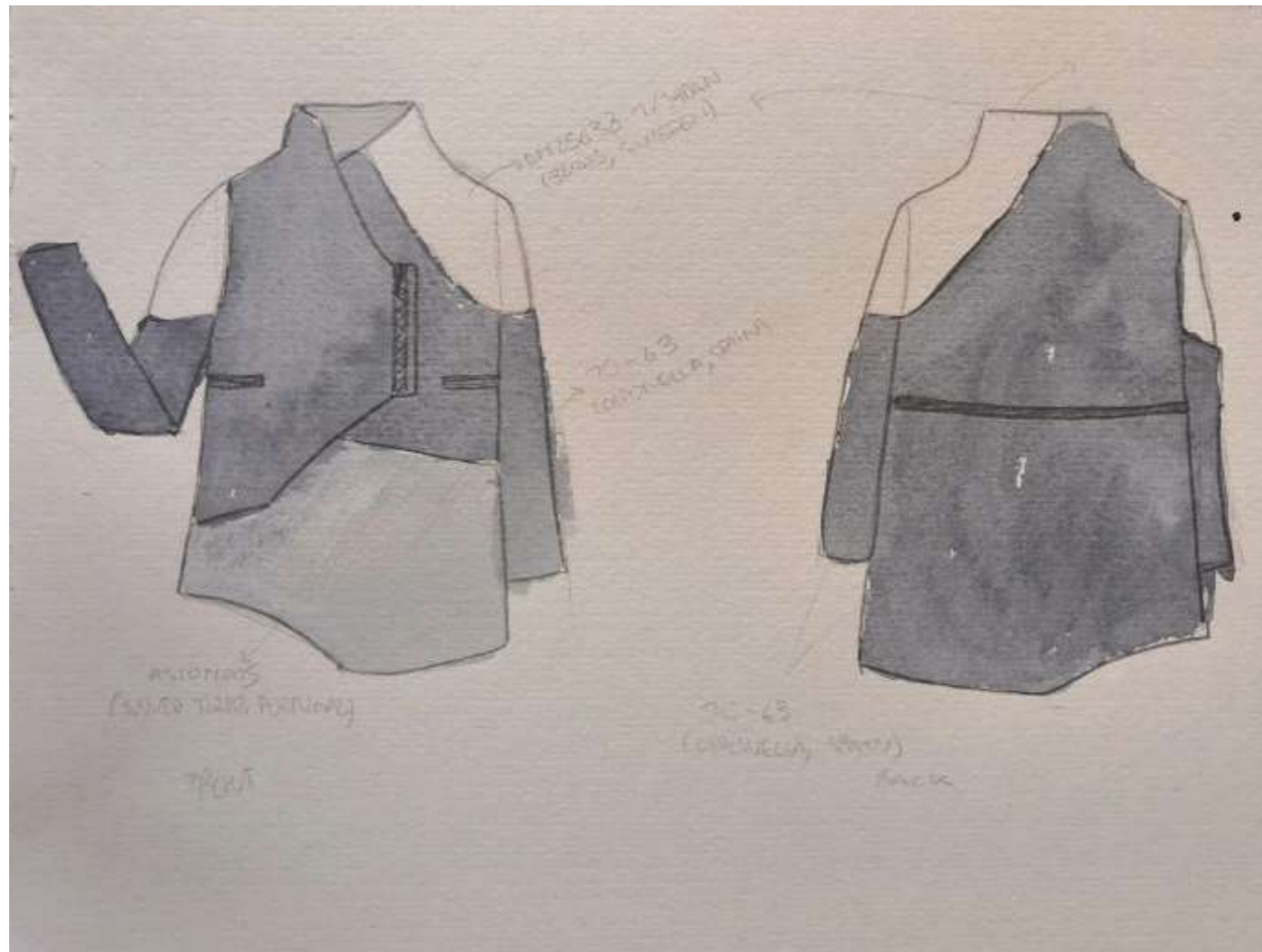


AS90M015 (PORTUGAL)

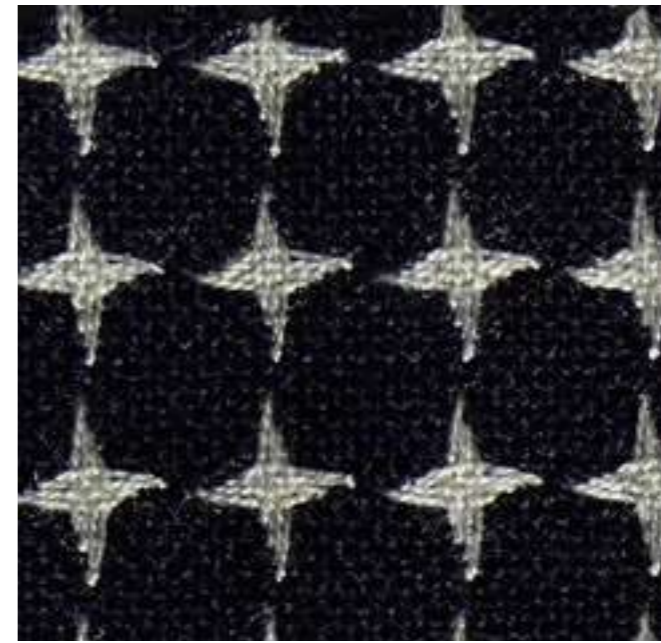


Design 2

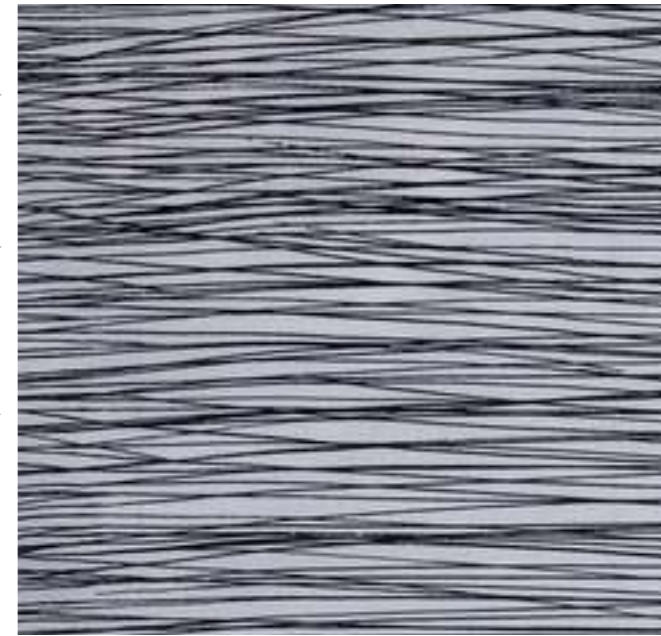
The designed piece is a reversible jacket, in the interior of the part there is a trait of triangles in the outside combined with the others, as well as the black of all the jacket and the part of the white shoulder. From this piece you can highlight, the zipper decentralized and integrated by one side invisibly and on the other visible. They would also put two knitted pockets with black fabric, which would follow them two black veins for the back part.



10-63 (SPAIN)



SM65638-1/JAPAN (SWEDEN)

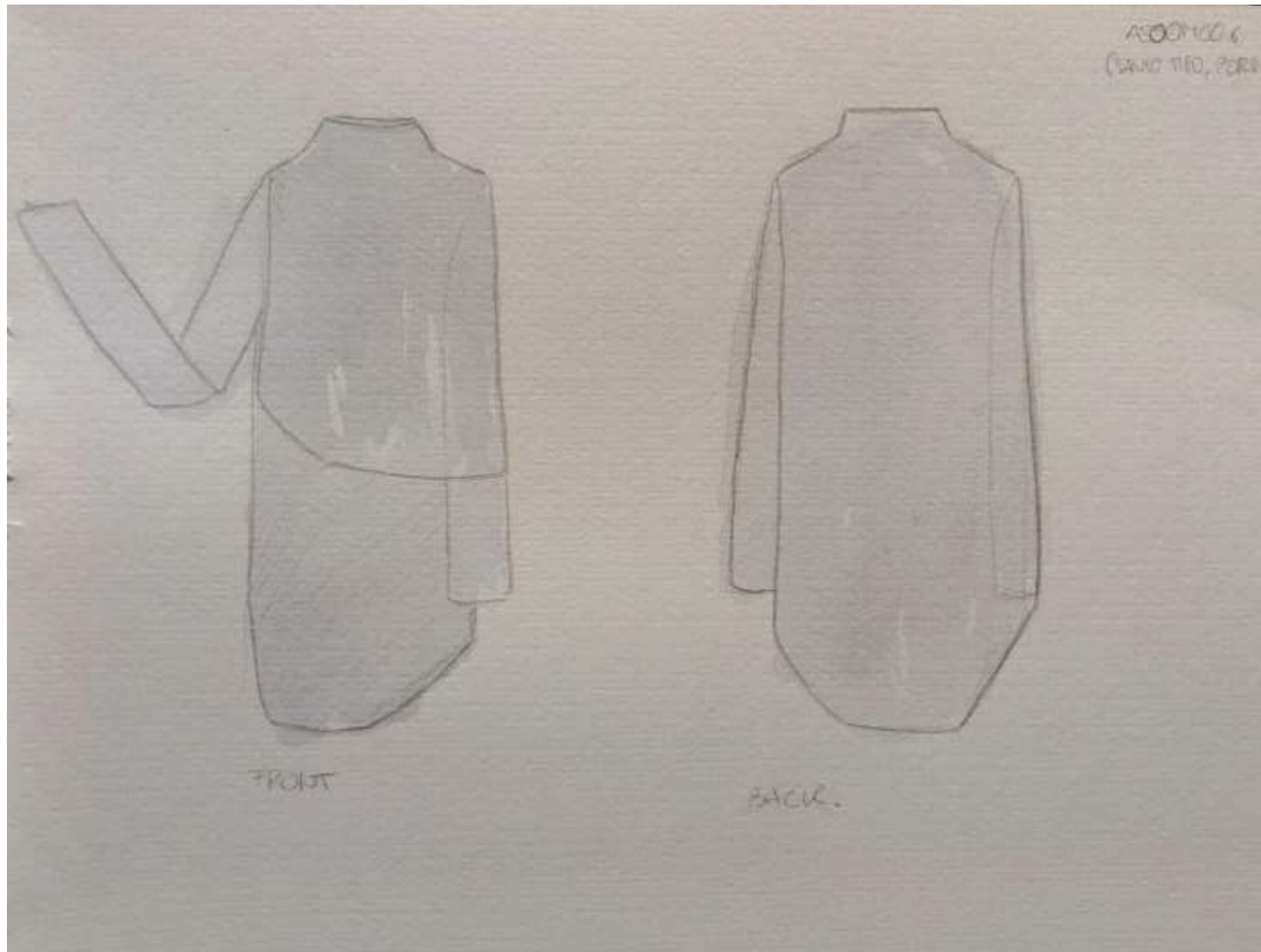


AS10M005 (PORTUGAL)



Design 3

The shirt is inspired by the knit fabric that can be seen on the right. The front part is shorter than the back.



AS00M006 (PORTUGAL)



Design 4

The pants are inspired by the black fabric on the right. Some shaggy pants, but made with the tailor methodology. On the front, a hug hidden by the false skirt we can see, which is roped with a ribbon on the right side of the trousers. In the back part, low pockets imitating in the pockets that are used with the sports pieces.



1574/GOGO'/60000 (ITALY)



After showing you all the pieces, I have to say that I have been inspired by the fabrics found in the Createx program, but always following my personal style and with which I feel so much identified. Neutral colors and asymmetrical silhouettes.

Thank you so much,
Queralt Portell